

# CEREX.

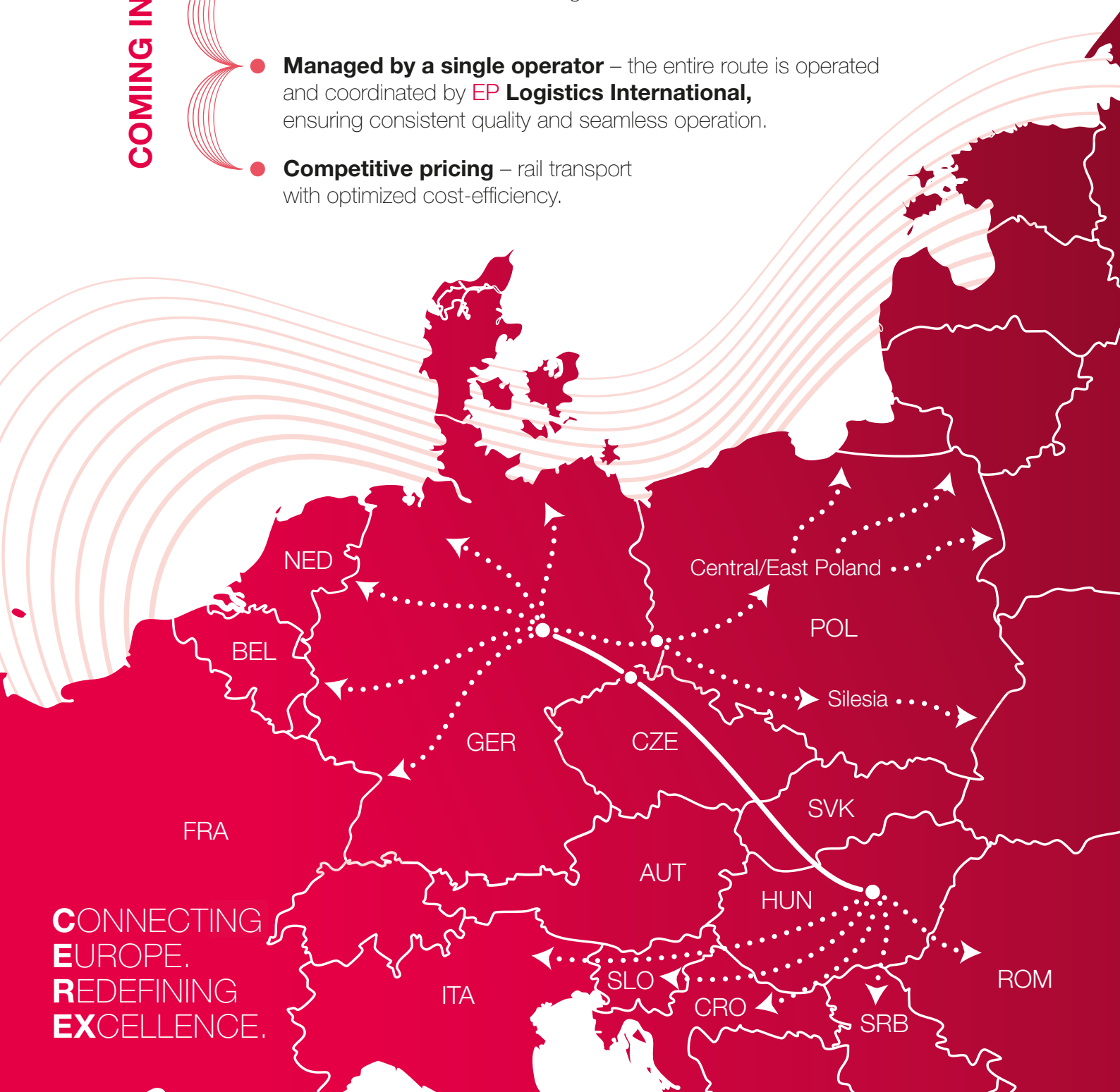
## CENTRAL EUROPEAN RAIL EXPRESS

*Efficient Rail Connection Between Germany and Hungary and Even Further – Wherever Your Cargo Needs To Be.*

COMING IN JANUARY 2026

- **Direct freight trains across 4 countries:** Germany, Czech Republic, Slovakia and Hungary – with further connections towards **Romania, Serbia and other Balkan countries** and beyond.
- **Connections also available west of Germany** to **Netherlands, Belgium, and major ports**.
- **One multi-system electric locomotive for the entire route** – no need for locomotive changes at borders.
- **Managed by a single operator** – the entire route is operated and coordinated by **EP Logistics International**, ensuring consistent quality and seamless operation.
- **Competitive pricing** – rail transport with optimized cost-efficiency.

CONNECTING  
EUROPE.  
REDEFINING  
EXCELLENCE.



# CEREX.

## CONNECTING EUROPE. REDEFINING EXCELLENCE.

*CEREx is a brand-new product launching in **January 2026**.*

*It was designed specifically for rail freight customers who need a **stable, reliable service for cross-border shipments in Central and Southeast Europe**. Whether you're heading east or west, CEREx simplifies your logistics – offering a dependable solution with professional coordination, **without unnecessary complexity**.*

### CEREX. means

Efficient rail routing between **Germany and Hungary**

**A strong and unified** operational structure

**Flexibility** to extend your shipments to key regions in the east and west

**Simplified border-crossing** – one locomotive, one plan, one operator

**Predictable, professional service** designed for today's rail freight needs

## Launch Your Cargo Into 2026 With CEREx

Let's move business together – with a smarter, more connected rail future.

### CONTACT US

**Anna GRUFÍKOVÁ**  
Sales Manager

@ anna.grufikova@epcargo.cz

+420 733 648 376

www.epcargo.cz/en

